

1. SPECIFICATIONS AND DIMENSION

1.1 Specifications

Type Hitachi KH700-2 Crawler Crane
 Lifting capacity 150,000kg
 Crane capacity 768,600kg.m
 Rated load × working radius 128,100kg × 6.0m

Item		Type	Crane with hook	Cramshell
Boom length (m)			18 ~ 60	18 ~ 27
Jib length (m)			19 ~ 31	-
Boom Jib (max.) (m)			69 + 31	-
Boom angle (°)			30 ~ 80	35 ~ 65
Bucket capacity (m ³)			-	2.5 (Medium type)
Operating speed m/min	* Rope speeds			
	Hoist (m/min)		High: 60, Low: 30	-
	Lower (m/min)		High: 60, Low: 30	-
	Opening/closing (m/min)		-	High: 60, Low: 30
	Holding (m/min)		-	High: 60, Low: 30
	Boom hoist (m/min)		22 × 2	
	Boom lower (m/min)		22 × 2	
Swing min ⁻¹ (r.p.m.)			High: 1.9, Low: 1.3	
* Propel km/hr			High: 1.0, Low: 0.5	
Gradeability %			30% (climb with base boom and cab placed at the rear)	
Engine rated output			ISUZU 12PB1 (Diesel) 184kW/2000min ⁻¹ (250PS/2000rpm)	
Crane gross weight (kg)			143,000 (with base boom and 150,000 capacity hook)	
Ground pressure			0.86bar (0.88kg/cm ²) (With base boom and 150,000kg capacity hook)	
Counterweight			51,000kg (4 pieces)	

NOTE: (1) *... Speed may vary with load. (without lowering of Main/aux. hook, boom)

(2) The rope speeds are calculated by bear drum.

Hook capacity (t)	Hook weight (t)	Maximum rated loads (1,000kg)															
		Rope reeving (Part line)															
		16	15	14	13	12	11	10	9	8	7	6	5	4	3	2	1
150	2.30	150	144	135	127	118	110	100	90	80	70	60					
100	1.40							100	90	80	70	60	50	40	30	20	10
60	0.95											60	50	40	30	20	10
25	0.85														25	20	10
9	0.37																9

WIRE ROPE DIA 26 MM

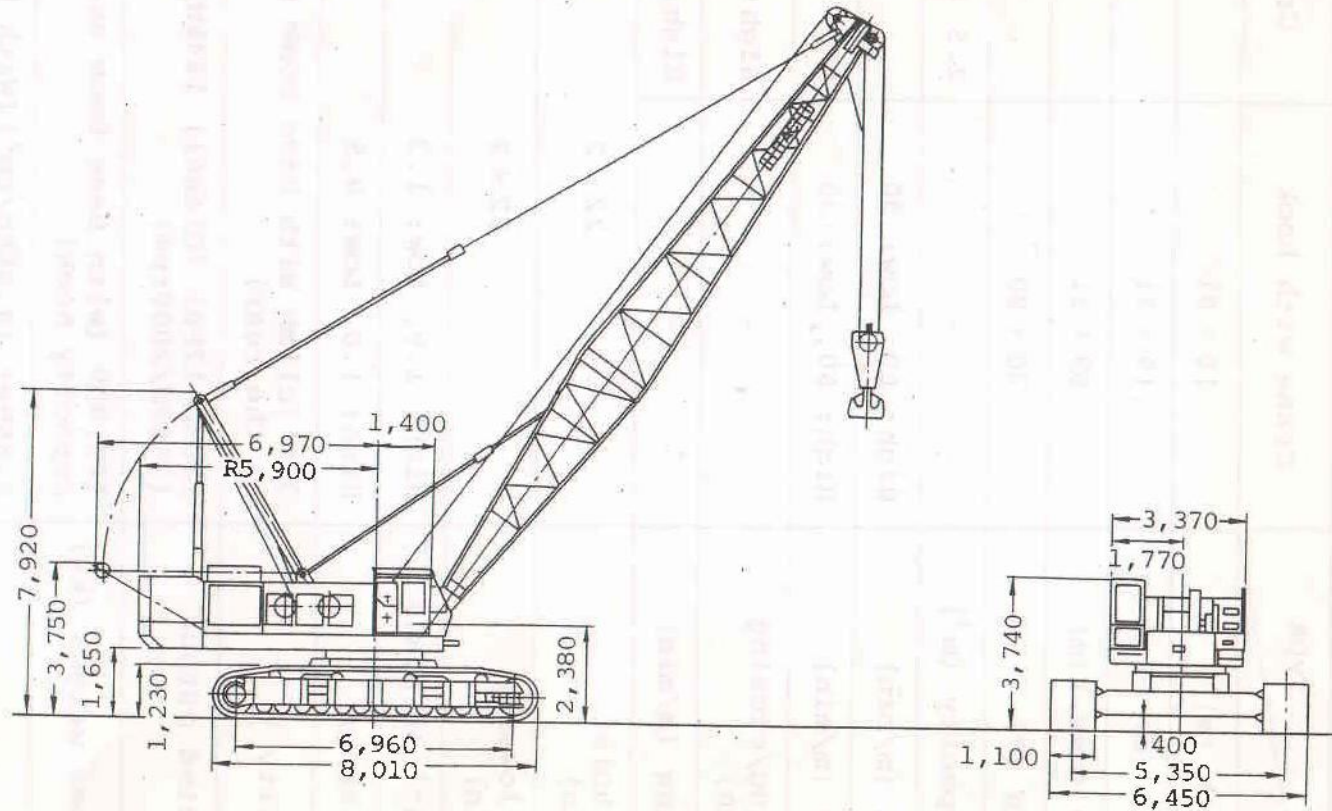


Fig. 1-1 KH700-2 Crawler Crane-Dimension

세노 - 150Ton - CRAWLER CRANE - KH700-2

Boom Len. \ Mode \ Radius (m)	RATED LOADS FOR MAIN BOOM									
	48.0m	51.0m	54.0m	57.0m	60.0m	63.0m	66.0m	69.0m	75.0m	81.0m
	#1010	#1011	#1012	#1013	#1014	#1015	#1016	#1017	#1018	#1019
10.0	10.1m/ 50.3	10.6m/ 46.0	11.1m/ 42.4	11.7m/ 39.0	12.5m/ 36.6	13.0m/ 32.7	13.5m/ 29.4			
12.0	47.3	45.0	41.2	38.6	36.6	32.7	29.4		15.0m/ 21.1	
14.0	36.5	36.4	38.7	36.1	34.2	31.3	28.8	26.4	21.1	
16.0	30.3	30.2	30.0	29.8	31.1	28.7	26.7	24.7	20.7	19.2
18.0	25.7	25.6	25.4	25.3	25.8	26.1	24.6	22.9	19.7	18.4
20.0	22.2	22.1	21.9	21.8	22.2	22.0	22.4	21.1	18.7	17.5
22.0	19.4	19.3	19.1	19.0	19.4	19.2	19.0	19.4	18.6	16.5
24.0	17.2	17.1	16.9	16.7	17.0	16.9	16.7	16.7	16.3	15.5
26.0	15.3	15.2	15.0	14.9	15.1	15.0	14.8	14.8	14.4	14.6
28.0	13.8	13.6	13.5	13.3	13.5	13.4	13.2	13.2	12.8	12.6
30.0	12.4	12.3	12.1	12.0	12.2	12.0	11.8	11.8	11.4	11.3
32.0	11.3	11.2	11.0	10.8	11.0	10.8	10.7	10.6	10.2	10.1
34.0	10.3	10.2	10.0	9.8	10.0	9.8	9.6	9.6	9.2	9.0
36.0	9.5	9.3	9.1	9.0	9.1	8.9	8.7	8.7	8.3	8.1
38.0	8.7	8.5	8.4	8.2	8.3	8.1	7.9	7.9	7.5	7.3
40.0	8.0	7.9	7.7	7.5	7.6	7.4	7.2	7.2	6.8	6.6
42.0	7.4	7.3	7.1	6.9	6.9	6.7	6.6	6.5	6.1	5.9
44.0	7.1	6.7	6.5	6.3	6.4	6.2	6.0	6.0	5.5	5.4
46.0	/43.1m	6.3	6.0	5.9	5.9	5.7	5.5	5.4	5.0	4.8
48.0		/45.7m	5.6	5.4	5.4	5.2	5.0	5.0	4.5	4.3
50.0			5.5	5.0	5.0	4.8	4.6	4.5	4.1	3.9
52.0			/48.3m	4.8	4.6	4.4	4.2	4.1	3.7	3.5
54.0				/50.9m	4.3	4.0	3.9	3.8	3.3	3.1
56.0					/53.5m	3.7	3.5	3.4	3.0	2.8
58.0						/56.1m	3.2	3.1	2.7	2.5
60.0							3.1	2.8	2.4	2.2
							/58.7m			